

For Information Contact:

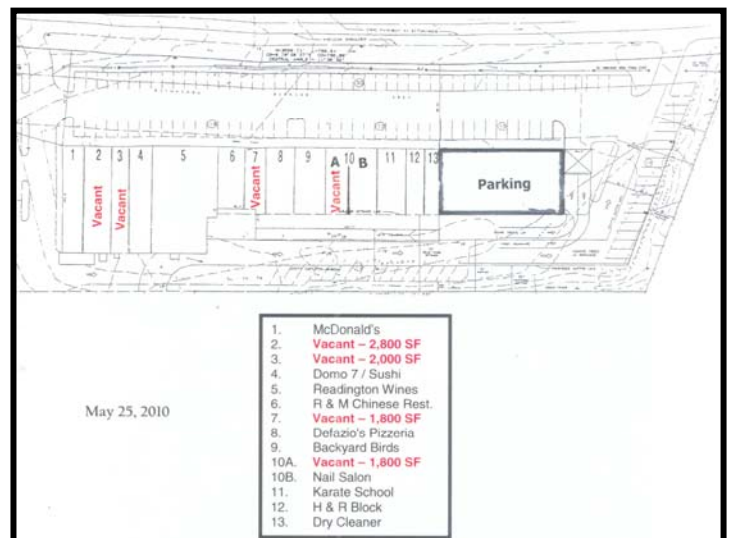
Vince Castagno
Bill Mooney
116 Route 22
North Plainfield, NJ 07060
Phone: 908 226-0123
Fax: 908 226-7426
E-Mail: vcastagno@netproperties.us
bmooney@netproperties.us

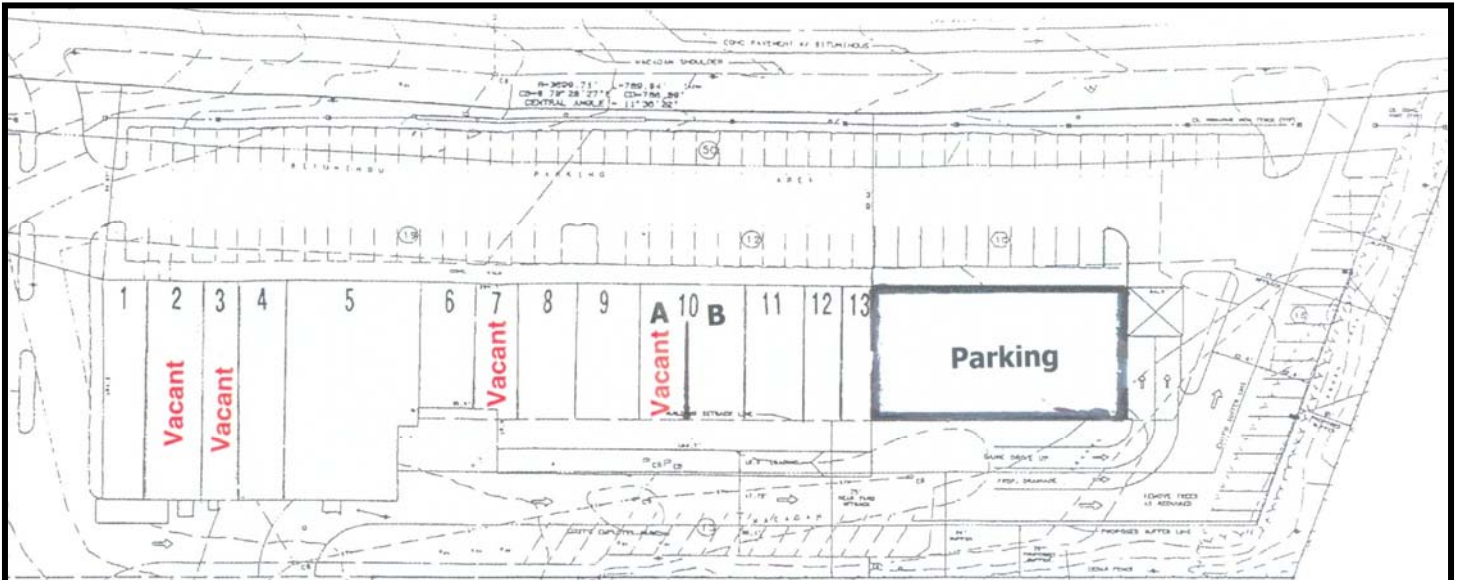


WHITEHOUSE STATION, NEW JERSEY

Route 22 at Juniper Road

Acreage:	5.2 Acres
Total GLA:	29,750 Square Feet
Available Sizes:	1,800 Square Feet (2 units) 2,000 Square Feet 2,800 – 4,800 Square Feet
Availability:	Immediate Availability
Rental Rate:	Market Rent
Parking:	150+ Parking Spaces
Traffic Count:	23,000 Cars Per Day
NNN Charges:	\$6.35 Per Square Foot
Frontage:	681' frontage on Route 22 East
Anchor/Tenants:	McDonald's, H&R Block, Nextel, Household Finance
Neighboring Retailers:	Kings, Bishop's, Rite Aid, Wal-Mart
Notes:	Busy Hunterdon County strip center with secondary neighborhood access. Newly renovated, great visibility and excellent demographics.
Demographics:	<u>3 Mile</u> <u>5 Mile</u> <u>10 Mile</u>
Population	10,380 31,932 211,177
Average HH Income	\$121,282 \$133,291 \$119,207





May 25, 2010

- 1. McDonald's
- 2. **Vacant - 2,800 SF**
- 3. **Vacant - 2,000 SF**
- 4. Domo 7 / Sushi
- 5. Readington Wines
- 6. R & M Chinese Rest.
- 7. **Vacant - 1,800 SF**
- 8. Defazio's Pizzeria
- 9. Backyard Birds
- 10A. **Vacant - 1,800 SF**
- 10B. Nail Salon
- 11. Karate School
- 12. H & R Block
- 13. Dry Cleaner

